

# Modern Karton



# Contents

- History
- Company Profile
  - Paper Mills
  - Water Treatment
  - Incineration Plant
  - Roll Grinding & Covering Plant
- Market Information

# History

**1974** 1978 1981 1987 1988 1991 2000 2008 2013

- Modern Karton was founded

# History

1974 **1978** 1981 1987 1988 1991 2000 2008 2013

- Modern Karton joined Eren Group

# History

1974 1978 **1981** 1987 1988 1991 2000 2008 2013

- PM1 started with 24,000 tons/year capacity

# History

1974 1978 1981 **1987** 1988 1991 2000 2008 2013

- Establishment of straw pulp facilities and upgrade of PM1 (30,000 tons/year)

# History

1974 1978 1981 1987 **1988** 1991 2000 2008 2013

- First anaerobic and aerobic water treatment facility in Turkey

# History

1974 1978 1981 1987 1988 **1991** 2000 2008 2013

- PM2 started production (Total 100,000 tons/year)



# History

1974 1978 1981 1987 1988 1991 **2000** 2008 2013

- PM3 started production (Total 300,000 tons/year)

# History

1974 1978 1981 1987 1988 1991 2000 **2008** 2013

- PM4 started production (Total 700,000 tons/year)

# History

1974 1978 1981 1987 1988 1991 2000 2008 **2013**

- PM1 and PM2 sold out (Total 630.000 tons/year)
- PM5 construction started

# COMPANY PROFILE

# Company Profile

Foundation

• 1974

Capacity of output

• 630.000 tons/year

Indoor Space

• 130.000 m<sup>2</sup>

Total Space

• 540.000 m<sup>2</sup>

Employee

• 550 (incl. PM5)

# Company Profile

- Largest company in paper industry in Turkey
- 37 % Market share in Turkey
- 84 % of export of Turkey in the sector
  - Export to UK, Italy, Bulgaria, Greece, Romania, Egypt, Israel, Tunisia, Morocco, Iran, Russia, Croatia, Serbia, S.Africa, Portugal, Mexica, USA, Dom.Rep., Cuba
- FSC, ISO 9001, 14001, 18001, 50001
- 1.030.000 tons annual production capacity targeted for 2015

# Company Profile

- Produce all kinds of recycled paper for corrugated boxes
  - Fluting  
(70-175gr)
  - Imitation NSSC  
(125-175gr)
  - Testliner  
(80-175gr)
  - White-top testliner  
(120-175gr)
  - Imitation kraft  
(115-175gr)



# Location





# Location



# Location



# Location



**modern karton**

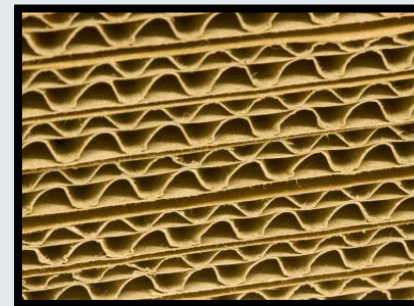


# Location



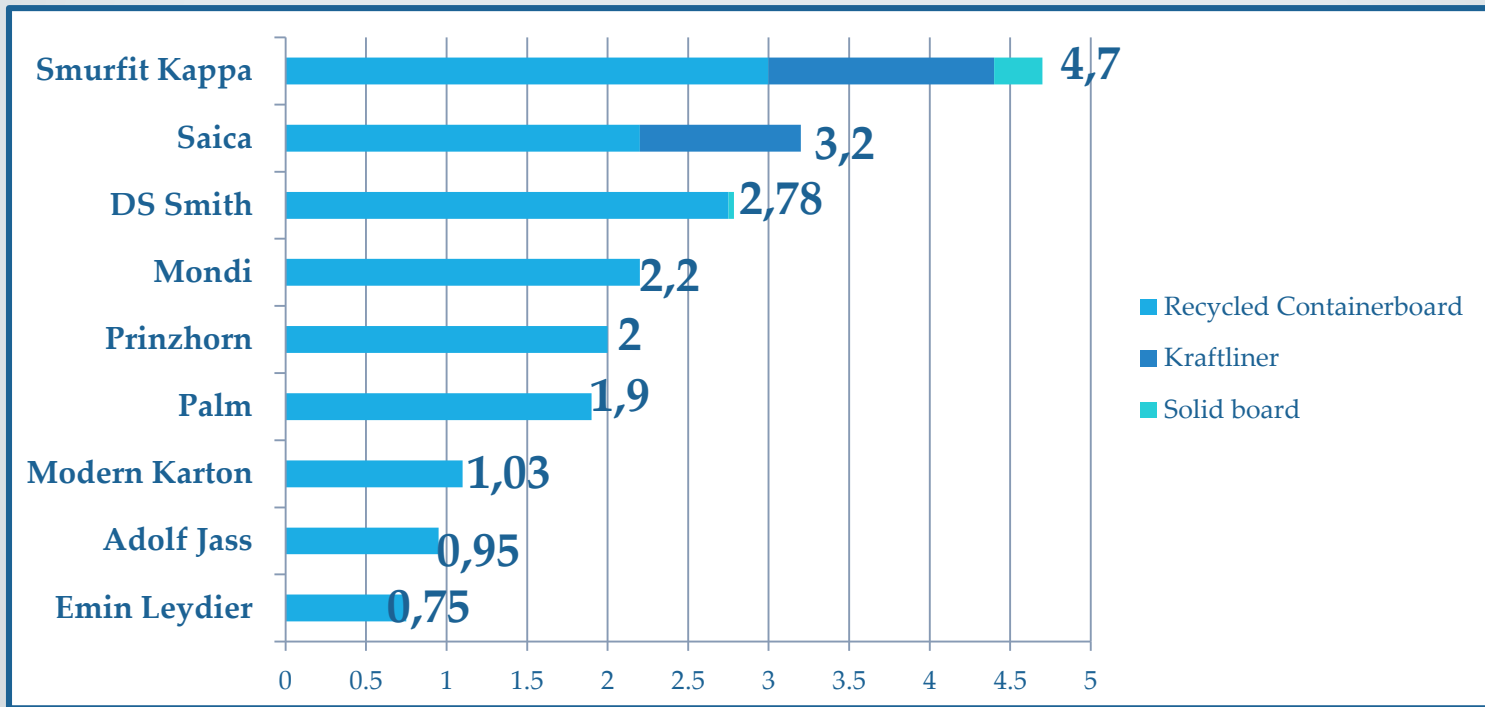
- 42 km to port
- 140 km to Bulgaria border
- 160 km to Greek border
- 120 km to Istanbul

# Integration Ratios



# Status in Europe

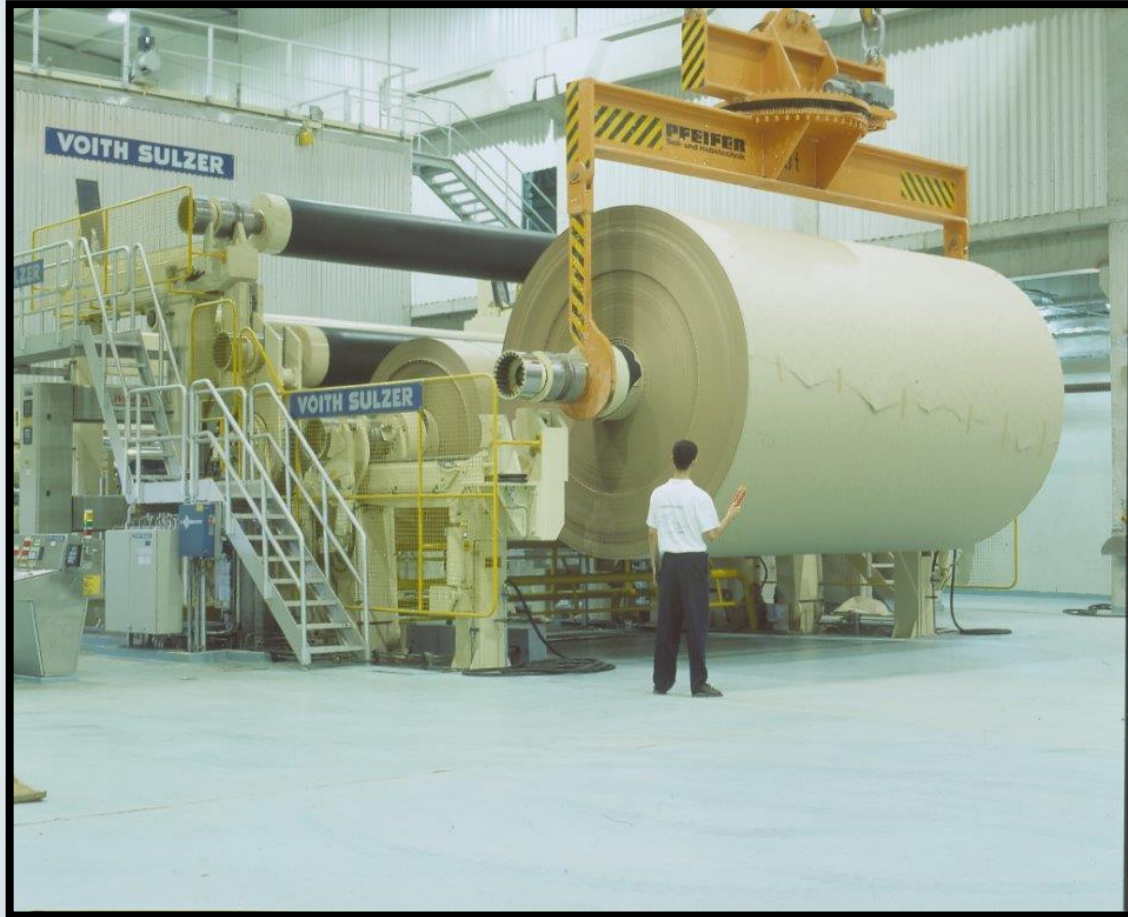
- 7th in Europe



# Company Strengths

- High capacity with low production cost
- Upstream integration
- Location of the factory
- Superb technology
- 90 % local supply of raw material

# PM3





# PM3

Brand

- Voith

Width

- 5.10 m

Capacity

- 230.000 tons/year

Speed

- 1000 m/min

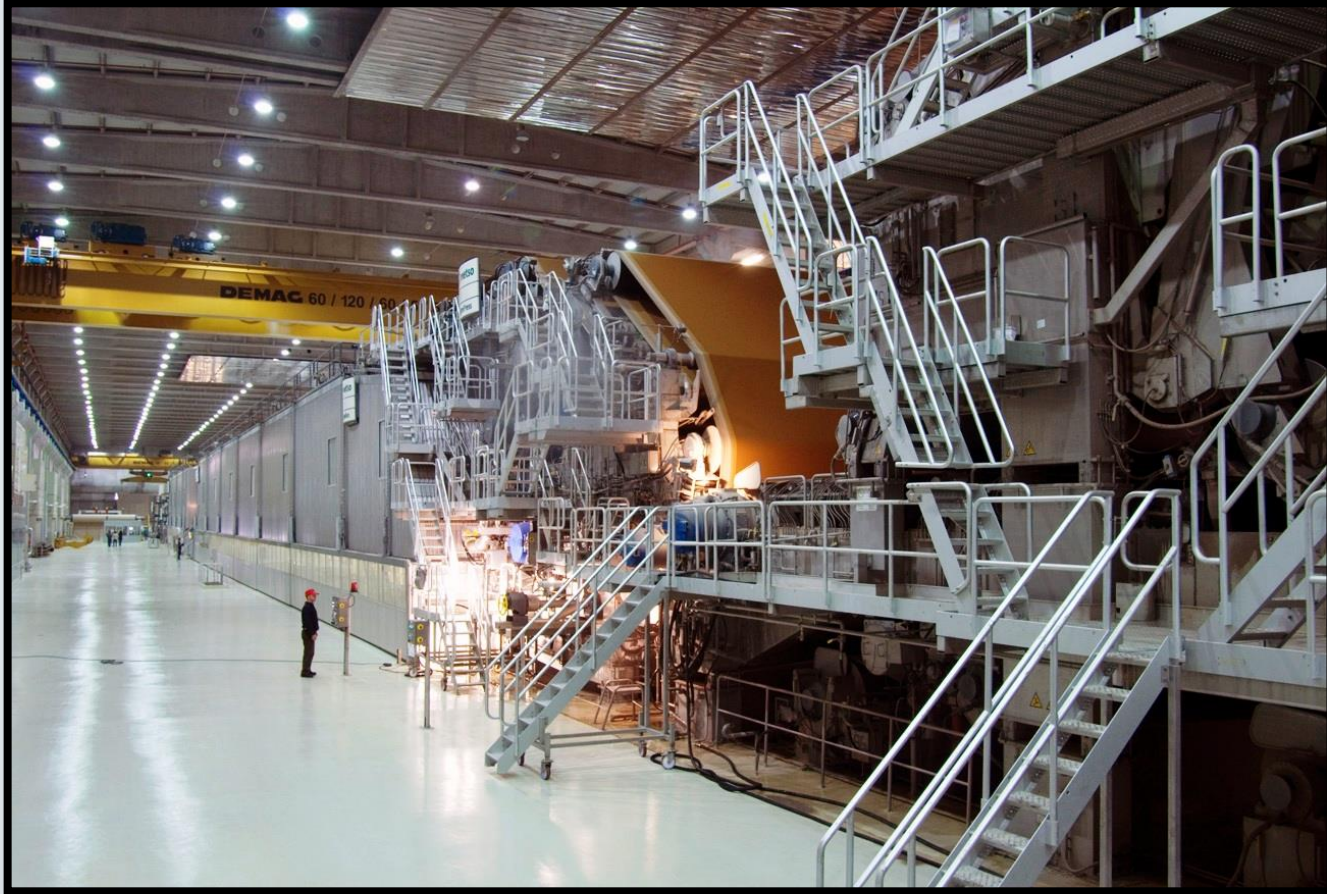
Products

- FL – NSSC – TL – WTL – MODKRAFT

Grammage

- 90-175gr

# PM4



# PM4

Brand

- Metso

Width

- 8.10 m

Capacity

- 400.000 tons/year

Speed

- 1.500 m/min

Products

- FL – NSSC – TL – MODKRAFT

Grammage

- 70-140gr

Total Investment

- 310 M € (incl. Work. Capt., Fins. Costs)

# PM5



# PM5

Brand	• Voith
Width	• 7.50 m
Capacity	• 400.000 tons/year
Speed	• 1.500 m/min
Products	• FL – NSSC – TL – MODKRAFT
Grammage	• 70-160gr
Total Investment	• 310 M € (incl. Work. Capt., Fins. Costs)

# Water Treatment



# Water Treatment

- 35 M € total investment
  - Biological water treatment
  - Ultrafiltration
  - Reverse osmosis
- With state of art technology reduced fresh water consumption 4,0 m<sup>3</sup>/ton
- No need additional fresh water supply for PM5
- Producing 5 MW/h electricity with 1 500 m<sup>3</sup>/h biogas combustion

# Incineration Plant





# Incineration Plant



# Incineration Plant

- Investment value 85 M €
- Max. Electricity Capacity: 27,6MW/h
- 1360 tons/day waste burning capacity
  - Rejects
  - Process Sludge
  - Water Treatment Sludge
- Licence to buy rejects from other companies

# Roll Grinding & Covering Shop



# Roll Grinding & Covering Shop

- Contract has been signed with Xerium
- Will be in process in 2015
- Able to grind up to 10m length and 100 tons of rolls
- Able to rubber and polyurethane coverings

# MARKET INFORMATION

# Corrugated Cardboard Ind. of Turkey

- Corrugated Cardboard Capacity (tons/year)

Turkey                    2,400,000 (initial)  
                                      650,000 (till the end of 2015)

Growth in Capacity in last 5 years = %30

- Corrugated Cardboard Consumption (tons/year)

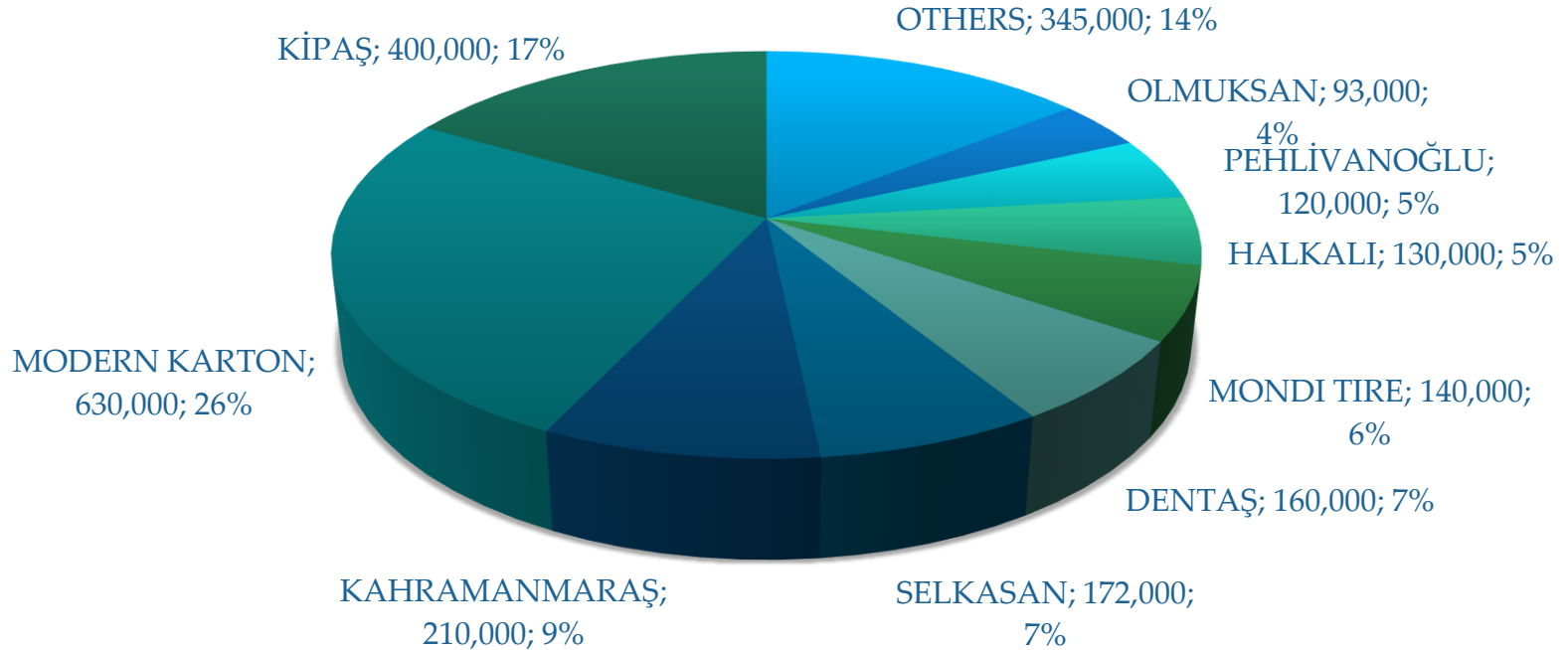
Turkey                    2,450,000

Growth in Consumption in last 5 years = %40

- 25 paper and board production lines

# Turkey Production Capacity

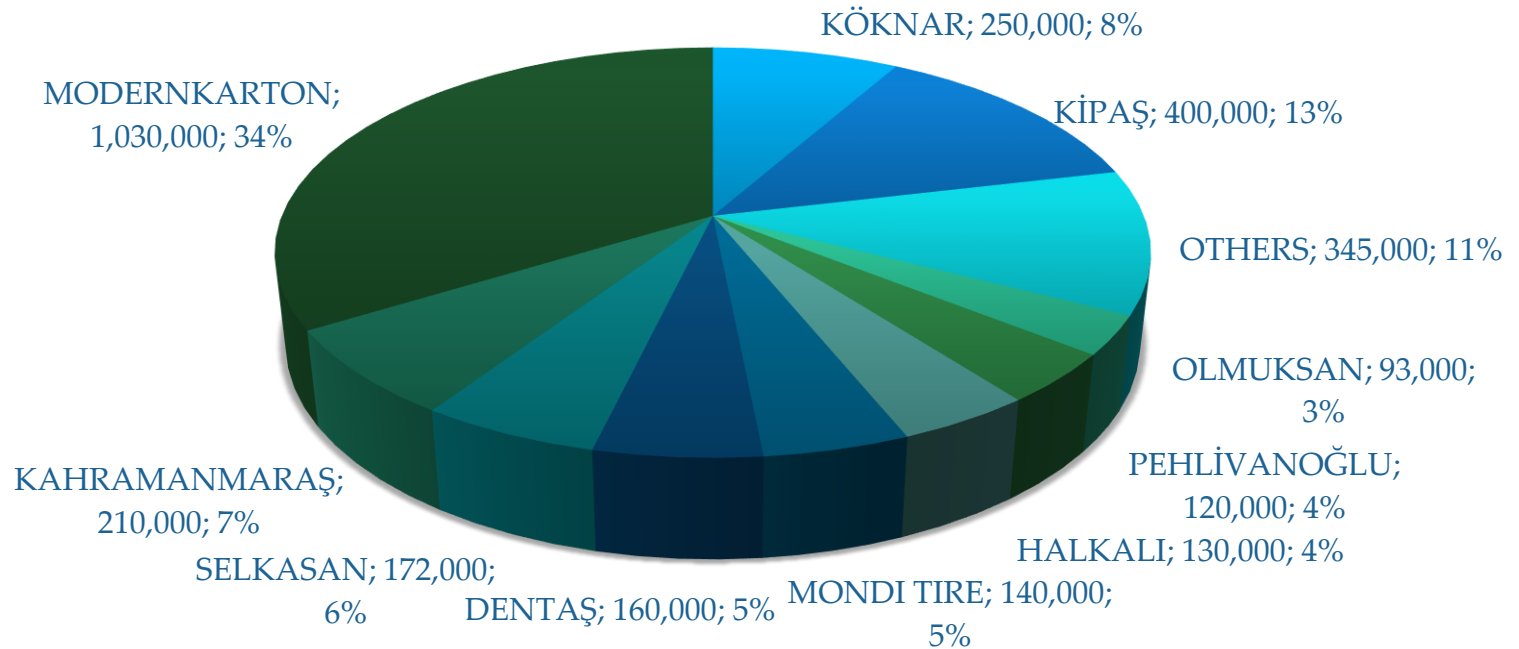
## 2014 CAPACITY (tons/year)



**TOTAL (tons/year) : 2.400.000**

# Turkey Production Capacity

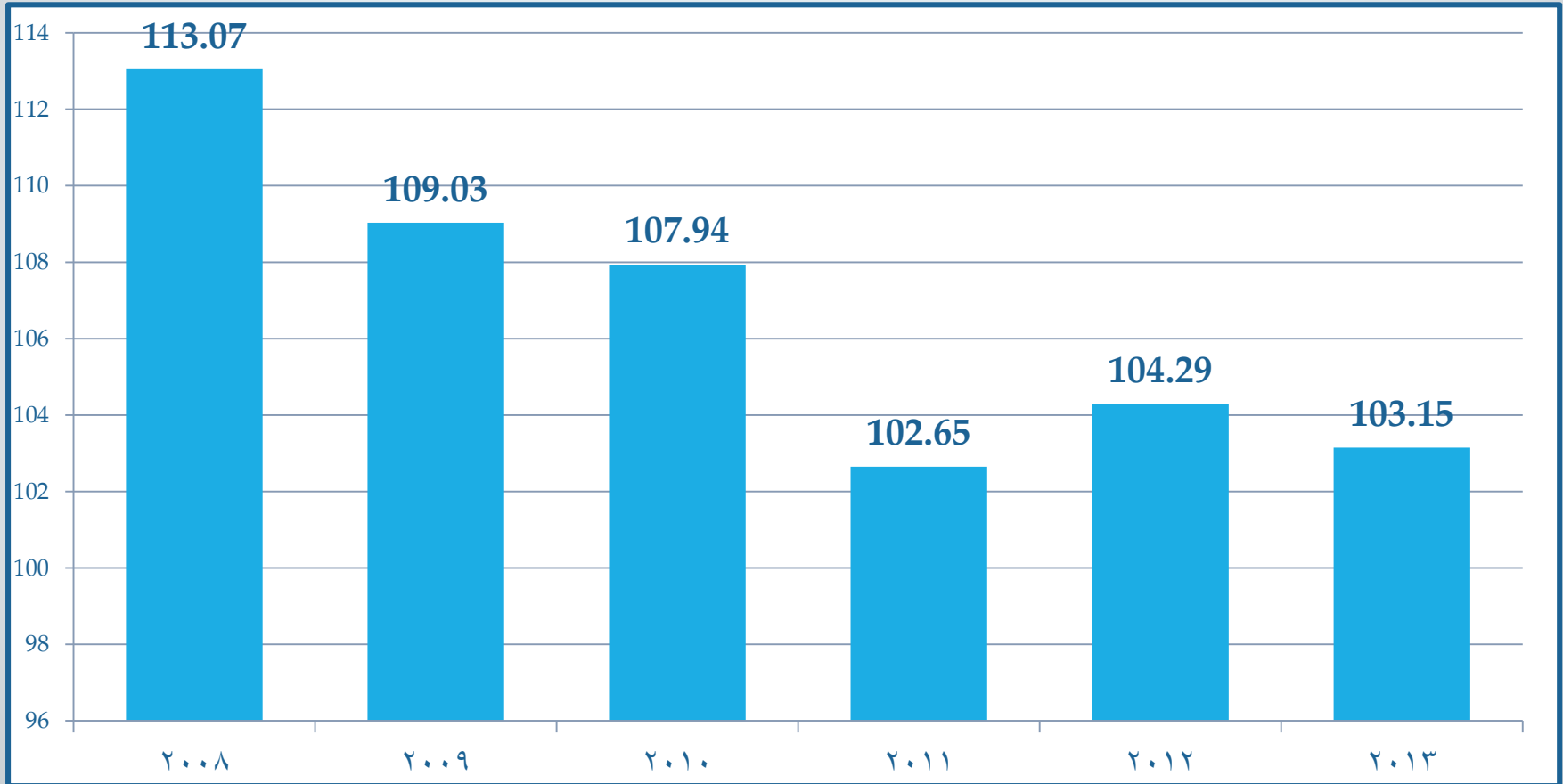
## 2015 CAPACITY (tons/year)



**TOTAL (tons/year) : 3.050.000**



# Average Grammage





**modern karton**

Thank You...